

# Vital Statistics

April, 2009 Issue 2

TO ILLUMINATE AND UNITE

## What's This?

by Gina Drew

*Welcome to Vital Statistics, the new Linfield College-Portland campus newsletter created by and for students!*

### What is the point of creating a school newsletter?

- In one forum we can merge the campus community into a cohesive whole, ensuring that everyone can access relevant information about events, clubs, resources, and more.
- Eventually we will be able to rely on the newsletter for most of our important campus-wide notifications, therefore decreasing the number of e-mails we receive.

### What should I expect each month from the newsletter?

- One large document containing information pertaining to the entire month will be e-mailed campus-wide at the beginning of each month.
- A condensed newsletter will be sent weekly, the first of which will also be available in printed form by the docket and in the commuter lounge and photo gallery.

### What information will the newsletter include?

- Events both on and off campus
- Student discounts
- Campus club information including contact and purpose
- Featured articles
- Faculty highlights

### How can I be an active member in our school discourse?

- Keep the newsletter staff posted on any campus events or health/nursing related events in the Portland area.
- If you have something you want to share with the campus community, e-mail the newsletter staff and ask that it be included.
- If you would like to write an article to be presented in a future newsletter, send the idea or the completed essay to the newsletter staff.



### CALENDAR OF EVENTS

April 15-16: ONA Convention

April 15-19: NSNA Convention

April 15: Forest Park Hike

April 20-24: Summer & Fall '09  
Registration

April 30: El Dia del Nino  
(Children's Day)

April 30: Ping Pong Tournament  
Deadline

for event details, see page 2

*Please note that there will be an e-mail alias for the newsletter, but until it is set up, please e-mail all suggestions to Gina Drew at [gdrew@linfield.edu](mailto:gdrew@linfield.edu)*

**Editor's Note:** The first edition of the Linfield College-Portland Campus Newsletter is dedicated to the students, staff, and faculty who brought it to fruition. Lisa Burch, Christopher Kahle, Steven Cheadle, Ken Westhusing, Diane Welch, and many others deserve recognition for their contributions. Thank you.

Events and Photo Contest Winners pg. 2

# Campus and Community Events

APRIL 15-16 Oregon Nurses Association Convention at Red Lion Hotel in Jantzen Beach. <http://www.oregonrn.org/>

APRIL 15-19 National Student Nurses' Association's Annual Convention in Nashville, Tennessee.

<http://www.nсна.org/meetings/convention.asp>

APRIL 15 The Linfield Student Activities Club (a.k.a. LSAC) is hosting their first activity this wednesday. We're hiking forest park. We plan on meeting and leaving from the blue room at 4:30pm. Those interested should join us. Dress comfortable and wear shoes you don't care to get dirty. For more information, contact Phillis Annoh at [pannoh@linfield.edu](mailto:pannoh@linfield.edu)

APRIL 20-24 Summer and Fall '09 registration begins. Make sure to speak to your adviser to be cleared for registration.

APRIL 30 The Office of Student Affairs and Multicultural Programs would like to invite you to celebrate El Dia del Nino (Children's Day), a popular Mexican holiday. This event is open to all, so feel free to bring the children in your family. We will be promoting healthy habits through fun activities. This is a great opportunity for faculty, staff, students, and community members to introduce children to the academic environment while encouraging health. For more information, contact Claudia Garcia at [clgarcia@linfield.edu](mailto:clgarcia@linfield.edu)

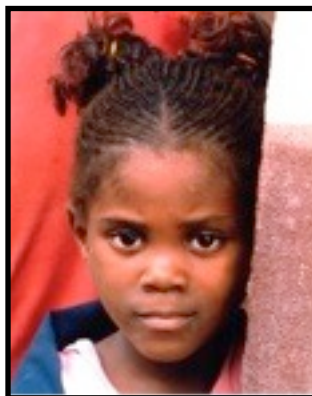
APRIL 30 It's that time again! Time to dust off that ping pong paddle and bring your best game to the annual ping pong tournament! Notify Jeremy Jasnoch by April 30th if you are interested in playing. Bracket placements will be drawn on May 1st in the blue room at 12:30pm. The tournament will be held on **Monday, May 4th** at noon. If weather permits, we may play in the courtyard. There will be prizes for 1st, 2nd, and 3rd place winners. Nicknames are not a must, BUT definitely add to the fun! Refreshments will be provided, so come cheer on your favorite ping pong players! Contact Jeremy Jasnoch: [jjasnoc@linfield.edu](mailto:jjasnoc@linfield.edu)

## 2009 Photo Contest Winners



**1st Place:** "Dome at St. Isaac's Cathedral"  
Russia January 2009  
Photo by Sami Stinson

**2nd Place:**  
"Mujuka Student"



Cameroon January 2009  
Photo by Lacey Parks

**3rd Place:**  
"Tude"

Cameroon January 2009  
Photo by Jamie Payne

