

# Vital Statistics

Sept. 2009 Issue 10

TO ILLUMINATE AND UNITE



## CALENDAR OF EVENTS

- Sept. 1-31: Bicycle Challenge**
- Sept. 2: Fall classes begin**
- Sept. 2: Free root beer floats**
- Sept. 3: Disease conference**
- Sept. 7: Labor Day**
- Sept. 14: Welcome Back Bash**

*for event details, see page 3*

## New Mentorship Program Prepares Students for Leadership, Nursing School

*By Kinara Brocius*

The mission statement of the Peer Resource Network (PRN), the new Linfield College-Portland Campus mentorship program, is to “connect a community of past, present, and future nursing students in an effort to instill confidence and ease transitions by providing support, guidance, and inspiration while fostering the core values of nursing.” This statement reflects the need for greater peer support and leadership opportunities among all Linfield students.

PRN was developed by a group of student leaders who envisioned a mentorship program that would be sustainable, beneficial, and realistic for both mentors and mentees. The program connects members of each graduating class with a student from the class graduating one year behind them, such as May '10 graduates pairing with May '11 graduates. The summer-start accelerated program students were the first to benefit from PRN, and mentors from the May '10 cohort are currently making contact with the May '11 students.

Since the program is still in its infancy, feedback about its successes and shortcomings are welcome. Please direct such comments to Alejandra Rotolo or Eric Stevenson, the council chairs for the program.

*Vital Statistics* now has its own email address! Contact us at [vitstats@linfield.edu](mailto:vitstats@linfield.edu). Also, don't forget to check out past editions at [http://www.linfield.edu/portland/vital\\_statistics.php](http://www.linfield.edu/portland/vital_statistics.php)!

Interviews pg. 2

Events pg. 3

Community Board pg. 4

# Portland Campus Gains Nursing Faculty, IT Director



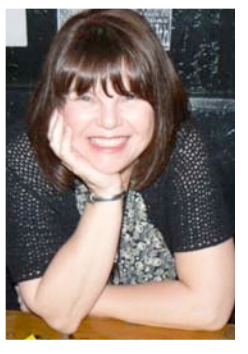
Susan Bankston comes to Linfield College-Portland Campus from Houston, Texas. She recently taught at the University of Texas School of Nursing at the Texas Medical Center and was on the Consult/Liaison Psychiatry team at M.D. Anderson Cancer Center in Houston. She is a board certified Family Psychiatric Mental Health Nurse Practitioner with experience in the care of the cancer patient, substance abuse rehabilitation, and correctional mental health. She recently co-authored a chapter on cancer and distress in *Cancer Nursing* (7<sup>th</sup> ed.) and is a contributing author to *Nursing research: Methods and critical appraisal for evidence-based practice* (7<sup>th</sup> ed.). This semester she is excited to be co-teaching Nursing 313, *Adapting to Health Challenges*. She teaches

because she enjoys the enthusiasm and energy of nursing students. Her goal is to help students become more confident and compassionate nurses. Susan enjoys exploring the magnificence of Oregon with her Great Pyrenees, Everest.

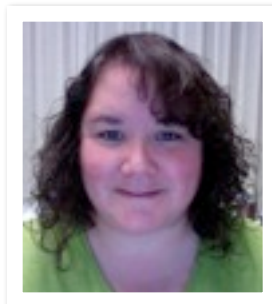
Melissa Jones, also a newly hired faculty member, states: “After teaching in an adjunct role in various courses over the past year, I was recently hired to teach in the RN-BS program full-time. I love working with students at Linfield because it gives me the opportunity to share my passion for nursing and make meaningful connections with students who are engaged in a powerful process of personal change and development. My nursing background includes a variety of experiences in acute care and community health. I have spent many years working as a hospice and palliative care nurse and in community health programs with a special focus on diabetes education, health promotion, minority health, and end-of-life care. I am very excited about teaching at Linfield in the coming year!”



Catherine Pollock-Robinson says, “Call me Cathy! My nursing journey started many years ago and includes 27 years in Neonatal Intensive Care Units and three years in Clinical Practice Support for Legacy Health Systems working with new hires during their orientation. I am a graduate of Linfield's RN-BSN program and received my Master of Nursing from WSU-Vancouver in May. I have always enjoyed working with students and especially enjoyed serving as a preceptor for Stewardship students from Linfield. I am looking forward to serving as clinical faculty for Nursing 213 and 106 this fall. My special interests in nursing and nursing education include simulation and transcultural concepts.”



Leitha Heine is the new Director of Information Technology for the Portland Campus. Her background includes being a Linfield graduate in Computer Science and working most recently at OHSU with their 17,000 node network. Her many goals for her position and the IT department include giving Linfield's Portland campus a standardized, reliable and stable computer system. It is her mission to help and educate all the members of Portland Campus with regards to computer systems and equipment in order to improve the educational experience of Linfield students. She states, “We can help with more than printing problems. If students or faculty have any questions about software tools, computer hardware, or anything computer related, we would be happy to have them come by and have a chat. We are here for everyone on the Portland Campus.”





## Campus and Community Events

### SEPT. 1st-31st

The Bicycle Commuter Challenge is an annual competition during the month of September between schools, businesses and organizations to promote bicycle commuting. If you already commute by bike or decide you'd like to try it, log onto <http://bikecommutechallenge.com> and join the Linfield College-Portland Campus team. Last year Linfield's 31 participants logged over 2,000 miles! If you log at least 5 trips during the month of September, you will be eligible for prizes including shirts, key chains and bike gear. For more information, contact Brian Roberts at [brobert@linfield.edu](mailto:brobert@linfield.edu).

### SEPT. 2nd- Wednesday

Classes start! ASLC-PC, the Portland Campus student government, will be serving free root beer floats in the courtyard at noon.

### SEPT. 3rd- Thursday

OHSU is hosting a city-wide infectious disease conference from 12-1:00 at St. Vincent Souther Auditorium.

### SEPT. 7th- Monday

Campus closed for Labor Day.

### SEPT. 14th- Monday

Welcome Back Bash begins at noon in the courtyard. Free lunch will be provided for all new and returning students. Campus groups such as student government, the newsletter, Sigma Theta Tau, and LSNA will have tables to increase awareness and involvement among students. Come mingle with fellow students, eat good food, and get involved with campus life!

# Community Board

## **FOR SALE**

**Note: Due to the high number of items for sale on the Community Board, each item will be featured in one edition and will be assumed sold unless the seller requests that the item(s) be reprinted in subsequent editions.**

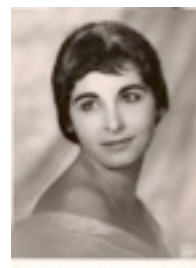
Maternal and Child Nursing Care, 2nd edition w/ c.d. by London, Ladewig, Ball & Binder. In good condition with no highlighting. Current required text for NUR 318. Email [kzicker@linfield.edu](mailto:kzicker@linfield.edu) if interested.

NCLEX review book: Saunders Comprehensive Review for the NCLEX-RN Examination, 4th edition by Linda Anne Silvestri. Paperback, ISBN 9781416037088, publication date 10/23/2007. Blue background with red & yellow writing. Contact Kaila Noble at [klemere@linfield.edu](mailto:klemere@linfield.edu) if interested.

Essentials of Nursing Research, 6th edition w/ c.d. By Polit and Beck. \$40 (paid \$56). Email [honeal@linfield.edu](mailto:honeal@linfield.edu) if interested.

## **LINFIELD COMMUNITY**

From student Erica Bailey: My mother, Rosemarie Consiglio-Bailey, passed away August 6, 2009 after an anguishing fight against Amyotrophic Lateral Sclerosis (ALS), commonly known as Lou Gehrig's disease. Walking was one of her favorite pastimes and it was the first that ALS took from her. In her honor, my family and I will be participating in the Walk to Defeat ALS on September 27th in Portland, to spread awareness about ALS and the urgency to find treatments and a cure. Please consider walking with me or sponsoring me in memory of my mother. Your help will make a difference in the lives of people affected by this tragic disease. Please feel free to invite your family and friends as well. You can visit my personal page at <http://web.alsa.org/goto/rosemarieconsigliobailey> or contact me via email at [ebailey@linfield.edu](mailto:ebailey@linfield.edu). For more information about ALS or the Walk to Defeat ALS™ event, please visit <http://www.walktodefataals.org>. I thank you in advance for your support.



The Ayudando Podemos Stipend application is now available. The due date is October 9th. There is a link on the Linfield website at [≤http://www.linfield.edu/portland/portland-campus-scholarships.php>](http://www.linfield.edu/portland/portland-campus-scholarships.php)

Sustainable Health Abroad, a group created by Linfield graduates, will be collecting leftover lab supplies for volunteer work that they will be carrying out in Uganda. Students can drop off donations in boxes around campus or at the student government office. Find out more about Sustainable Health Abroad at <http://www.sustainablehealthafrica.com/SHA/Welcome.html> and please drop off anything you have!

A Linfield chapter of Nursing Students Without Borders is in the works and will be functional soon. The club's purpose is to promote awareness of global health concerns and to facilitate student involvement in study abroad programs, medical missions trips, and other local and foreign opportunities. To get involved, please contact Kinara Brocius at [kbrociu@linfield.edu](mailto:kbrociu@linfield.edu).

The Linfield Student Nurses' Association has three open positions and will be holding a special election soon. They are also seeking recipes to include in a fundraising cookbook. For more information, contact Tomi Lesh, LSNA President, at [tlesh@linfield.edu](mailto:tlesh@linfield.edu).